



AMI[®] DCM GenAI Service – README

AMI SOFTWARE UTILITY README

REVISION 1.6 – NOVEMBER 7TH, 2025

NDA REQUIRED



AMI® DCM GenAI Service Installer & Uninstaller - README

© Copyright 2025 AMI.

All rights reserved.

ami.com

This publication contains proprietary information that is protected by copyright. No part of this publication can be reproduced, transcribed, stored in a retrieval system, translated into any language or computer language, or transmitted in any form whatsoever without the prior written consent of the publisher, AMI.

All trademarks and trade names used in this document refer to either the entities claiming the marks and names or their products. AMI disclaims any proprietary interest in trademarks and trade names other than its own.

Revision History

Date	Revision	Description
June 10, 2025	1.0	DCM GenAI service installer and uninstaller support
June 12, 2025	1.1	Integrated Ollama Model Management
October 08, 2025	1.2	Updated DCM GenAI Service setup details. Bumped up the README document version to match the GenAI Service executable version
October 27, 2025	1.3	Added steps for .exe-based installation
October 28, 2025	1.4	Formatted document as per the template
November 04, 2025	1.5	Updated the Installation screenshots
November 07, 2025	1.6	Prerequisites script and Installation steps update



Disclaimer

This publication could include technical inaccuracies or typographical errors. Changes are periodically made to the information herein; these changes will be incorporated in new editions of the publication. AMI may make improvements and/or revisions in the product(s) and/or the program(s) described in this publication at any time.

Requests for technical information about AMI products should be made to your AMI authorized reseller or marketing representative.

This publication contains proprietary information which is protected by copyright. No part of this publication may be reproduced, transcribed, stored in a retrieval system, translated into any language or computer language, or transmitted in any form whatsoever without the prior written consent of the publisher, American Megatrends International LLC. American Megatrends International LLC retains the right to update, change, modify this publication at any time, without notice.

For Additional Information

Call American Megatrends International LLC. at 1-800-828-9264 for additional information.

Limitations of Liability

In no event shall American Megatrends be held liable for any loss, expenses, or damages of any kind whatsoever, whether direct, indirect, incidental, or consequential, arising from the design or use of this product or the support materials provided with the product.

Limited Warranty

No warranties are made, either expressed or implied, with regard to the contents of this work, its merchantability, or fitness for a particular use. American Megatrends assumes no responsibility for errors and omissions or for the uses made of the material contained herein or reader decisions based on such use.

Trademark and Copyright Acknowledgments

Copyright © 2025 American Megatrends International LLC. All Rights Reserved.

American Megatrends International LLC

3095 Satellite Boulevard

Building 800, Suite 425

Duluth, GA 30096 (USA)

All product names used in this publication are for identification purposes only and are trademarks of their respective companies.



Table of Contents

AMI® DCM GenAI Service Installer & Uninstaller - README	i
Revision History	ii
Disclaimer	iii
Table of Contents	iv
1 Overview	5
2 Ports Used	6
3 Prerequisites	7
4 AMI® GenAI Service Setup Instruction	8
5 Install/Upgrade Ollama on Windows	9
6 AMI® GenAI Service Installation and Uninstallation Instructions	12
6.1 AMI® DCM GenAI Service Installation Instructions	12
6.2 AMI® DCM GenAI Service Uninstallation Instructions	16
6.3 AMI® DCM GenAI Service Status	18
6.4 AMI® DCM GenAI Service Logs	18

1 Overview

This README document provides details of AMI[®] DCM GenAI Service Prerequisites, stepwise instructions to install and uninstall the service.

General Notes:

- Begin each installation with a clean environment. If **AMI[®] DCM Gen AI Service** is already installed, uninstall it.
- Begin by installing the AMI[®] DCM Service, then run the prerequisite script, and finally install the GenAIService.
- The AMI[®] DataCenterManager and AMI[®] DCM GenAI services must be installed in the same directory
- To ensure that the AMI[®] DCM GenAI Service works correctly, you must reinstall the AMI[®] DCM GenAIService whenever you update or reinstall AMI[®] DataCenterManager.

Chapter 2

2 Ports Used

- 1 DCM GenAI Service port (SSL enabled) - 8743
- 2 Ollama port – 11434

Note: *DCM GenAI Service will automatically enable these ports in the firewall configuration.*

Chapter 3

3 Prerequisites

- Operating System: Windows 11
- System Configuration
 - ✓ CPU - Intel(R) Xeon(R) Silver 4410T 10 Core- 20 thread CPU or equivalent
 - ✓ Memory – 64GB
 - ✓ Storage – 1 TB
- Ollama Inference Engine
 - ✓ Manual installation is required. For additional information, see “Install Ollama on Windows.”
- Local LLM
 - ✓ Automatic Installation – The DCM GenAI Service installer sets up your preferred model, compatible with Ollama.

Chapter 4

4 AMI[®] GenAI Service Setup Instructions

- 1 Install/Upgrade the Ollama. For more details, follow the **Install/Upgrade Ollama on Windows** instruction in this guide.
- 2 Run the **prerequisite_genai_service.bat** file to setup the runtime environment for AMI[®] DCM GenAI Service.
- 3 Then Install AMI[®] DCM GenAI Service. For more details, refer to **AMI[®] DCM GenAI Service Installation Instruction** in this guide.

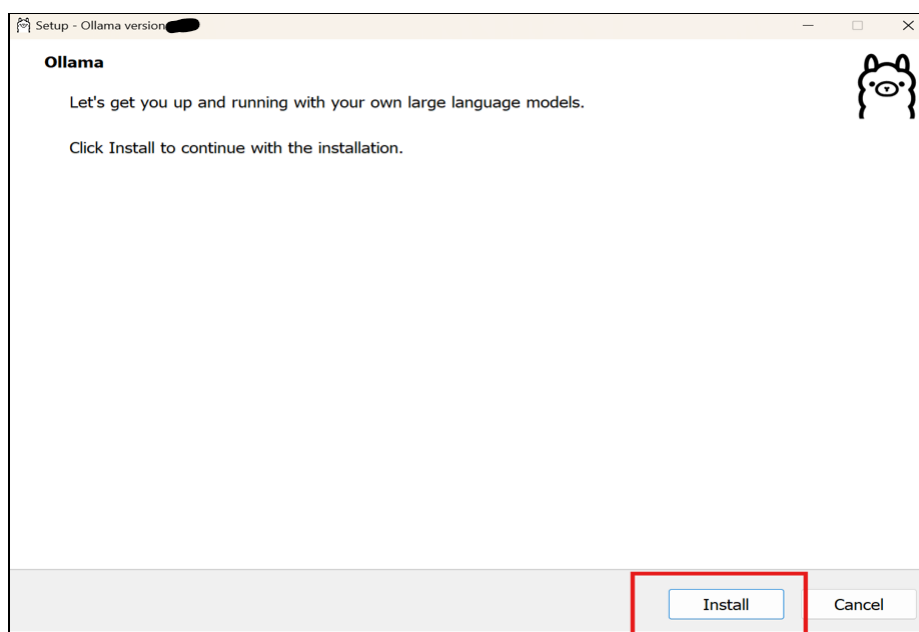
Chapter 5

5 Install/Upgrade Ollama on Windows

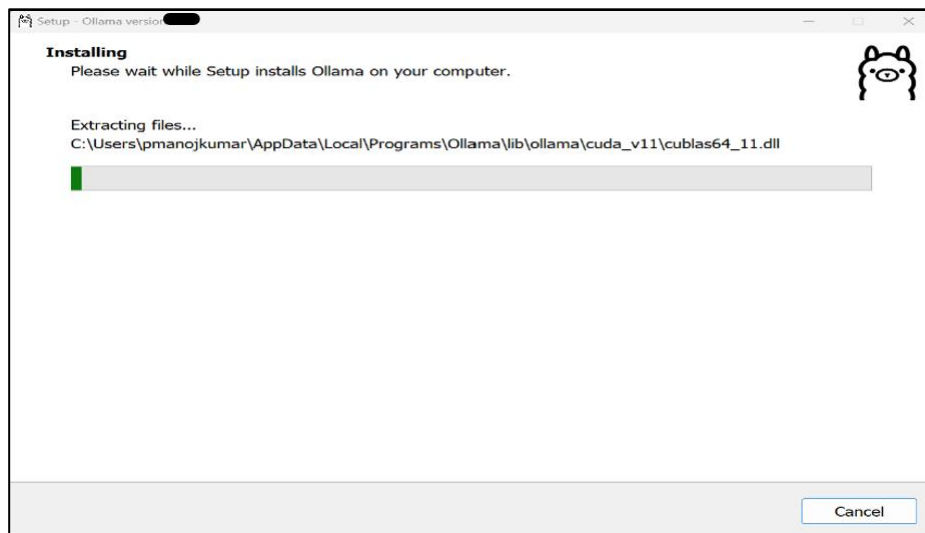
- 1 Download Ollama Windows installer using the following link
<https://github.com/ollama/ollama/releases/download/v0.12.3/OllamaSetup.exe>
- 2 Open **OllamaSetup.exe** from your downloads folder to start the installation.

Note: The file is usually downloaded and stored in the Downloads directory, for example:
C:\Users\<YourUsername>\Downloads\OllamaSetup.exe.

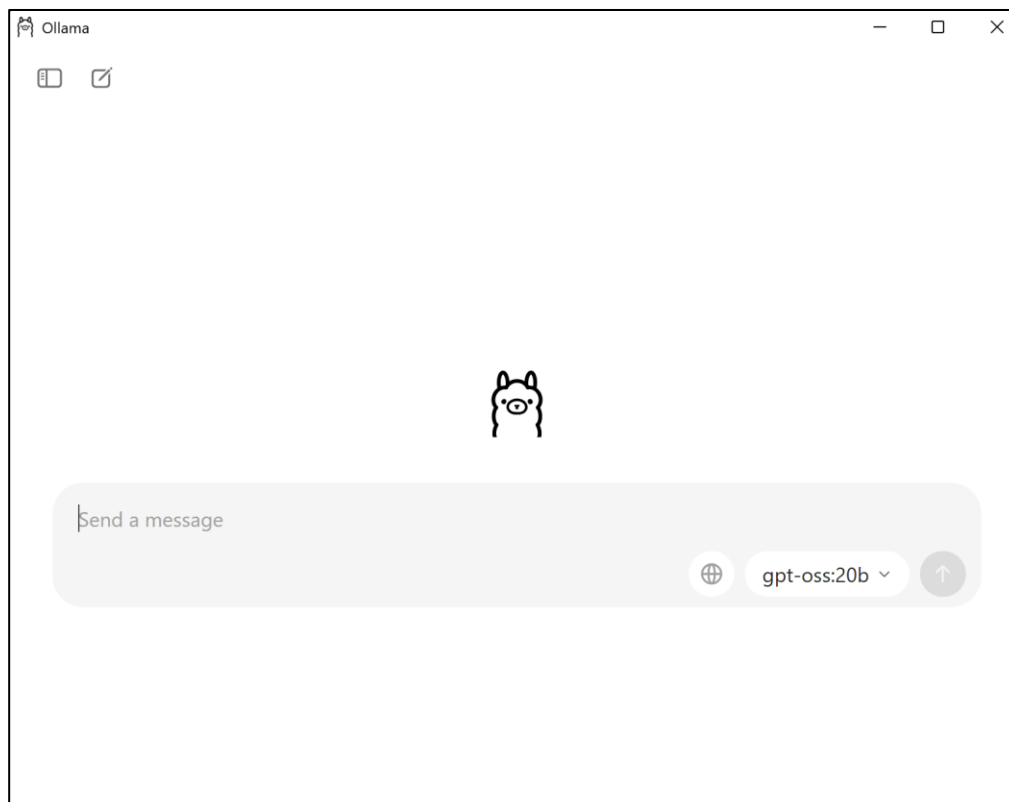
- 3 Click **Install** to begin.



- 4 Wait until the installation is finished.



- 5 Once the installation is complete, the following screen will appear.



- 6 Open a Command Prompt or PowerShell window and run the following command to check if ollama is running.

\$ ollama --version

Note: The output must print the installed Ollama version as shown in the screenshot below.

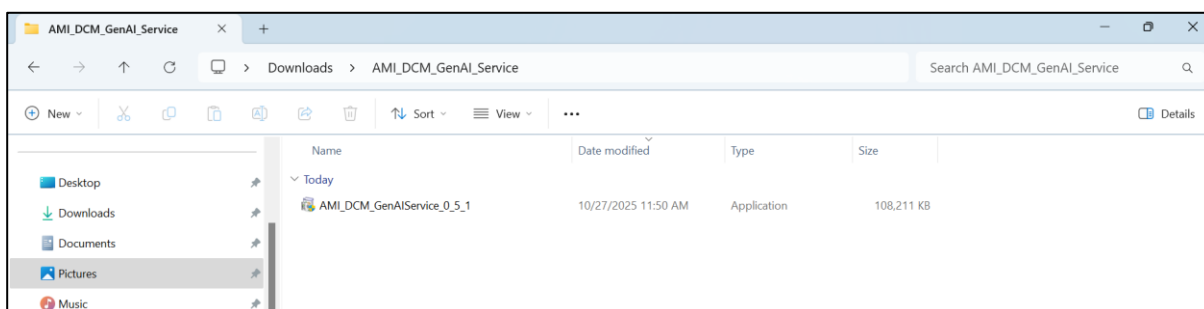
```
C:\Windows\System32\cmd.e  ×  +  ∨  
Microsoft Windows [Version 10.0.26100.6584]  
(c) Microsoft Corporation. All rights reserved.  
  
C:\Windows\System32>ollama --version  
ollama version is 0.12.3
```

Chapter 6

6 AMI® GenAI Service Installation and Uninstallation Instructions

6.1 AMI® DCM GenAI Service Installation Instructions

1. Download the **prerequisites_genai_service.bat** file and AMI_DCM_GenAIService_x.x.x.exe package, where x.x.x is service major version, minor version and auxiliary version.
2. Go to the files downloaded folder and right click on the **prerequisites_genai_service.bat** file
3. Select **Run as administrator** to set up the runtime environment required by the AMI® DCM GenAI Service.
4. Wait until the setup is complete and successful
5. Once the runtime environment setup is complete, double-click the AMI_DCM_GenAIService_x.x.x.exe to start the AMI® DCM GenAI Service installation process.



6. During installation, you may see a **Windows Defender SmartScreen** warning message:

“Windows protected your PC – Windows Defender SmartScreen prevents an unrecognized app from starting. Running this app might put your PC at risk.”

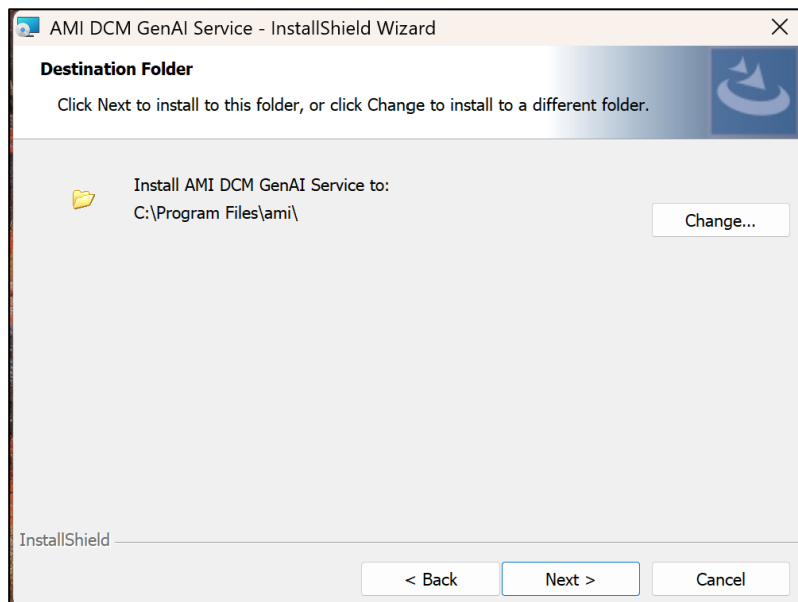
This message appears because the application is not yet recognized by Windows. To proceed with the **installation**, click **More info**, and then select **Run anyway**.



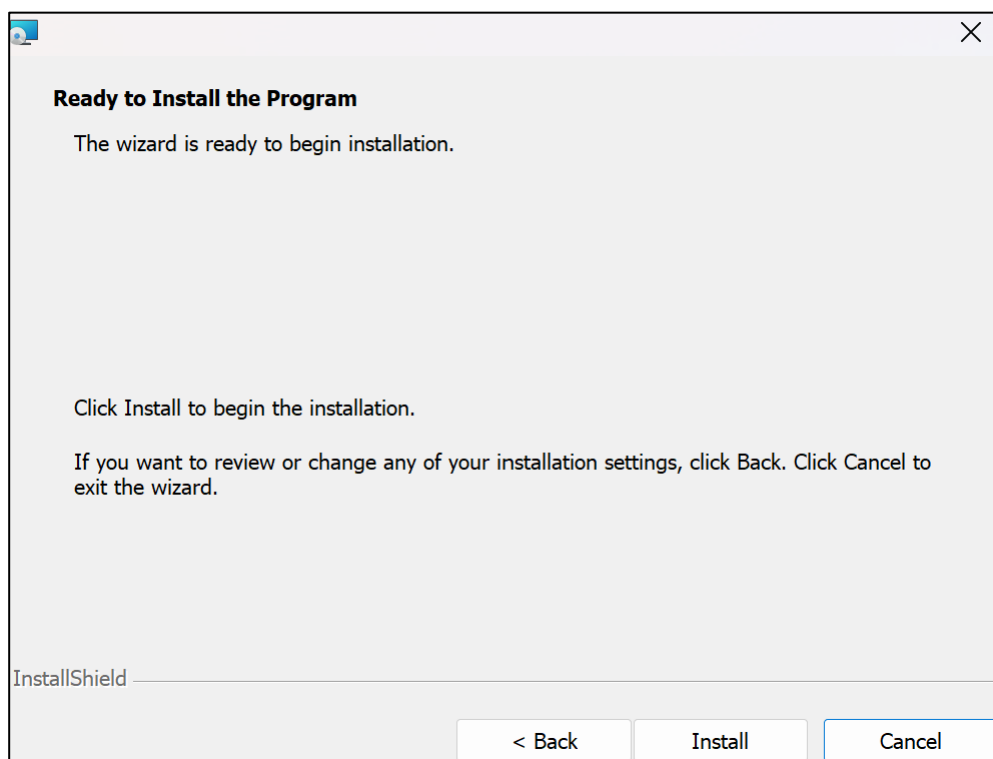
7. Read the License Agreement and select the **I accept the terms in the license agreement** and click **Next**.



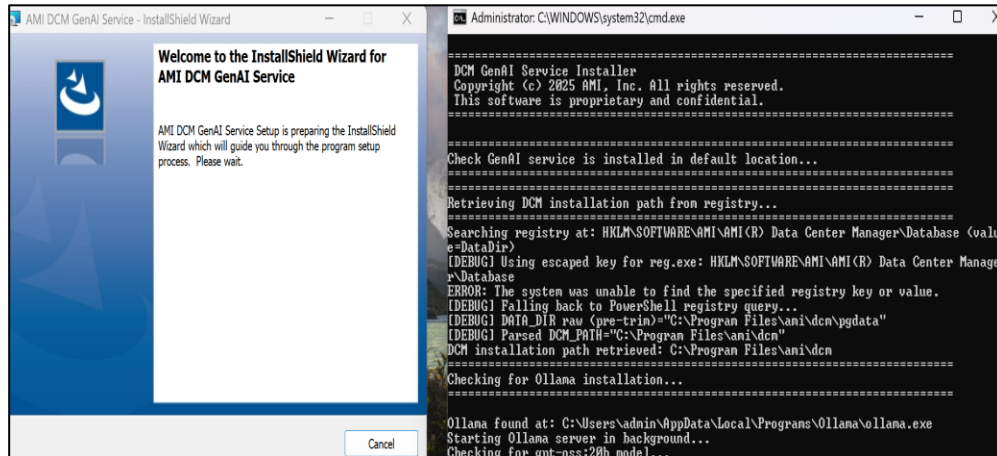
8. If AMI® DataCenterManager is installed in the **default installation directory**, click **Next** to continue. If AMI® DataCenterManager is installed in a **custom location**, click **Change**. This will open the file browser window. Select the installation path, click **Ok** and then click **Next**. For example, AMI® DataCenterManager is installed in D:\dcm\ami, select the D:\dcm\ami.



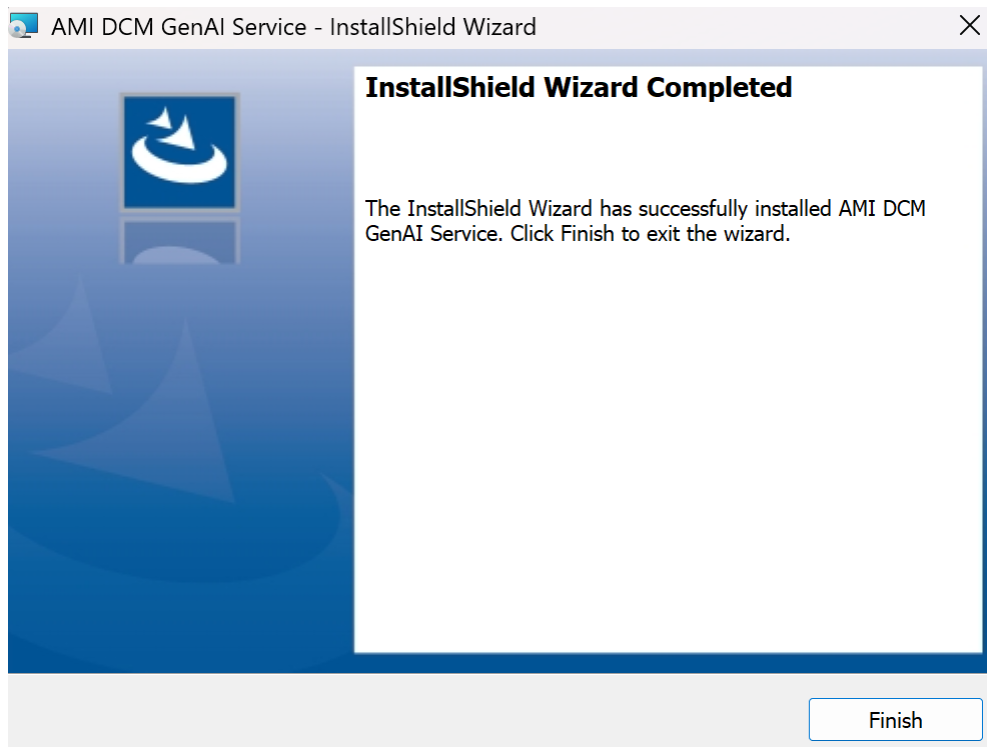
9. Click **Install** to start the installation.



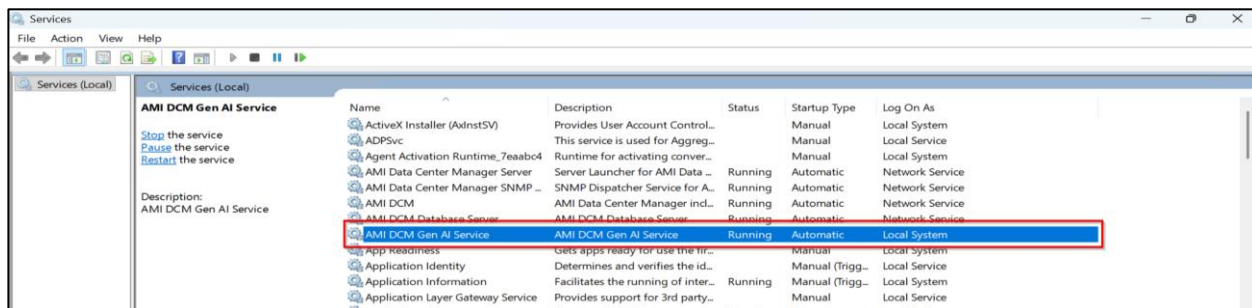
You may see the installation screen as below



10. Wait until the installation is complete, once completed click **“Finish”**

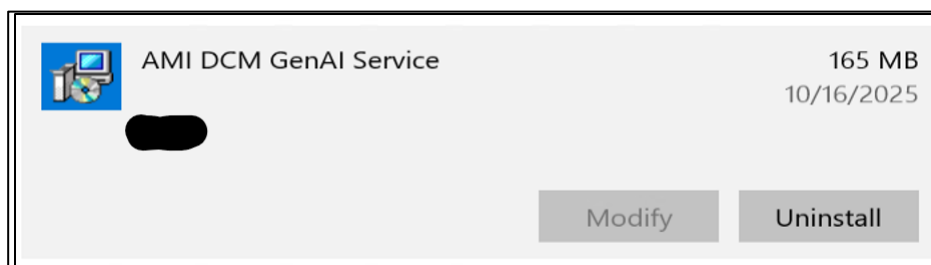


11. Upon successful installation, the service will start automatically. Refer to the screenshot below.



6.2 AMI[®] DCM GenAI Service Uninstallation Instructions

- 1 Uninstallation can be performed via Windows “Add or Remove Programs”.



- 2 During the uninstallation procedure, a notification will be displayed requesting confirmation as to whether you wish to remove the log files.

Respond with Y(Yes) or N(No) as appropriate.

```
C:\WINDOWS\System32\cmd.exe

=====
GenAI Service Uninstaller
Copyright (c) 2025 AMI, Inc. All rights reserved.
This software is proprietary and confidential.
=====

Checking for existing GenAIService Windows service...
=====
DCMGenAIService not found. Nothing to remove.

Checking for virtual environment directory...
No virtual environment found at C:\Users\admin\manoj\LBAA_GenAIService_V0.5\lenovo_dcm_chatbot\venv.

Do you want to remove the logs directory as well? (Y/N)
Remove logs [Y/N]?
```

- 3 Next, a prompt will ask to remove the current Ollama model; respond with **Y**, if desired.

```
C:\WINDOWS\System32\cmd.exe

=====
GenAI Service Uninstaller
Copyright (c) 2025 AMI, Inc. All rights reserved.
This software is proprietary and confidential.
=====

Checking for existing GenAIService Windows service...
DCMGenAIService not found. Nothing to remove.

Checking for virtual environment directory...
No virtual environment found at C:\Users\admin\manoj\LBAA_GenAIService_V0.5\lenovo_dcm_chatbot\venv.

Do you want to remove the logs directory as well? (Y/N)
Remove logs [Y/N]? N
Logs directory retained.
Do you want to remove the Ollama model as well? (Y/N): N
Skipping Ollama model removal.

=====
GenAI AI Service has been uninstalled successfully
=====

Press any key to continue . . .
```

4 Please wait until the uninstallation process is complete.

Note: During uninstallation, the script will do the following:

- Stops and removes the AMI® DCM GenAI Service.
- Delete the virtual environment created during prerequisite installation.
- Deletes the logs directory following user confirmation with a 'Y' response.
- Deletes the Ollama model when the user confirms with 'Y'.
- Removes the installation directory that was copied during installation.

6.3 AMI® DCM GenAI Service Status

- 1 Go to **Task Manager -> Services**
- 2 Locate **AMI DCM Gen AI Service** and make sure its status is **Running**.

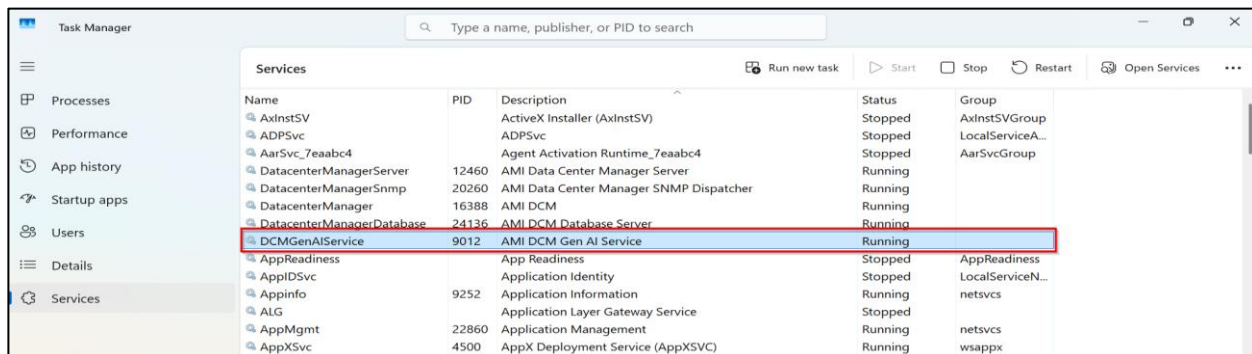


Figure 1 AMI DCM Gen AI Service

6.4 AMI® DCM GenAI Service Logs

- 1 Logs are available in the **logs** directory inside the installation folder.

Eg: **C:\Program Files\ami\DCM_GenAIService_v<major>.<minor>\logs**

genai_node_logs.log	10/9/2025 2:19 PM	Text Document	1 KB
genai_server_api.log	10/9/2025 2:18 PM	Text Document	2 KB
genai_server_error.log	10/9/2025 2:18 PM	Text Document	1 KB
genai_service_installer.txt	10/9/2025 2:17 PM	Text Document	3 KB